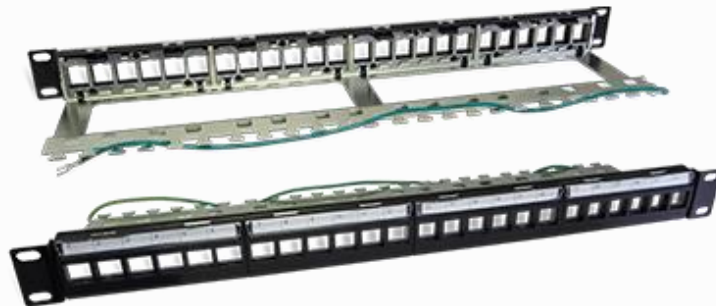


Blank Patch Panel



IKCOM offers wide variety of blank patch panels for different installation site. The blank patch panel is ideal for data, voice, and audio/video Ethernet cabling systems. The blank patch panel can accept UTP/STP keystone jacks, keystone footprint couplers and multimedia snap-in modules to configure your Ethernet patch panel to accommodate a variety of schemes. The blank patch panel can be mounted to any standard 19-inch relay rack, cabinet or wall bracket to create a specialized rack mount patch panel to fit your individual networking requirements.

- **Fixed High Density**

Ordering Information

Part No.	Description
IKC-PM2240000	1U 24-port UTP blank patch panel, H.D. version 1.75" x 19"
IKC-PM2240008	1U 24-port UTP blank patch panel, H.D. version, with plastic rear cable management 1.75" x 19"
IKC-PM3240000	1U 24-port UTP blank patch panel, H.D. version 1.75" x 19"
IKC-PM3240004	1U 24-port UTP blank patch panel, H.D. version, with metal rear cable management 1.75" x 19"
IKC-PM3240008	1U 24-port UTP blank patch panel, H.D. version, with plastic rear cable management 1.75" x 19"
IKC-PM32400S0	1U 24-port STP blank patch panel, H.D. version 1.75" x 19"
IKC-PM32400S4	1U 24-port STP blank patch panel, H.D. version, with metal rear cable management 1.75" x 19"

Blank Patch Panel



IKC-PM32400S8	1U 24-port STP blank patch panel, H.D. version, with plastic rear cable management 1.75" x 19"
IKC-PMD2400S0	1U 24-port STP blank patch panel, H.D. version 1.75" x 19"
IKC-PMD2400S8	1U 24-port STP blank patch panel, H.D. version, with plastic rear cable management 1.75" x 19"
IKC-PM2480000	2U 48-port UTP blank patch panel, H.D. version 3.5" x 19"
IKC-PM2480006	2U 48-port UTP blank patch panel, H.D. version, with metal rear cable management 3.5" x 19"

- Front Loadable High Density

Ordering Information

Part No.	Description
IKC-PM4240000	1U 24-port UTP blank patch panel, H.D. version, front loadable module 1.75" x 19"
IKC-PM4240005	1U 24-port UTP blank patch panel, H.D. version, front loadable module, with rear cable management
IKC-PMH2400S0	1U 24-port STP blank patch panel, H.D. version, front loadable module 1.75" x 19"
IKC-PMH2400S8	1U 24-port STP blank patch panel, H.D. version, front loadable module, with rear cable management 1.75" x 19"
IKC-MG12400SM	1U 24-port STP blank patch panel, H.D. version, front loadable bezel, with rear cable management 1.75" x 19"
IKC-MG224000M	1U 24-port UTP blank patch panel, H.D. version, front loadable module, with rear cable management 1.75" x 19"
IKC-MG22400SM	1U 24-port STP blank patch panel, H.D. version, front loadable module, with rear cable management 1.75" x 19"

- Staggered Openings

Ordering Information

Part No.	Description
IKC-PM5240000	1U 24-port UTP blank patch panel, staggered openings 1.75" x 19"
IKC-PM5240005	1U 24-port UTP blank patch panel, staggered openings, with rear cable management 1.75" x 19"